

Zhiwa Ling Resort

The first 5 star resort in the Paro Valley to be owned and operated by a Bhutanese enterprise.

The 45-room Zhiwa Ling combines the sensibilities of a fine Bhutanese guesthouse with the best of 21st Century technology. Envisioned and created by a local Bhutanese company, the hotel's elaborate hand-carved wooden cornices and masterful stonework coexist beautifully with cutting-edge telecommunication systems and Swedish under-floor heating.

The spa offers all the amenities of a modern fitness centre – sauna, steam room, gym – as well as a traditional Bhutanese outdoor hot-stone bath. There is a Business Centre, and a Tea House, two fully-equipped conference rooms and a Meditation House. One restaurant specializes in contemporary international cuisine, the other classic Bhutanese dishes. And everyone gathers at the Mad Monk Bar for after-hours fun.

Honouring the spiritual heritage of this ancient Buddhist kingdom, a temple has been built into the second floor of the hotel, made with 450-year-old timbers from the famous Gangtey Monastery, the crowning glory of this new ten-acre cultural landmark in the quiet Paro Valley where Zhiwa Ling fully lives up to its name: Place of Peace.

Rooms & Rates:

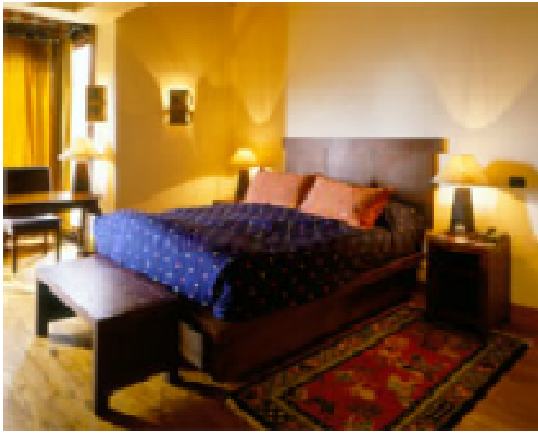
From all 45 suites. There are superlative views over the blue pine forests and mountain ranges. All the Juniper suite rooms have private balconies. The Blue Poppy Suite and Takin Suite feature a separate living room and one bedroom. The Royal Raven Suite has separate living room, two bedrooms and an exclusive shrine.

Guest rooms are appointed with oak floors, hand-knotted rugs and rich furnishings reflecting the heritage of the country, and respect the traditional skills of local craftsmen. All rooms feature satellite television, direct dial telephones and wireless internet connectivity. In-room dining, laundry and the Spa add to the experience of living in the place of peace.

Suite Category :

- ✦ Juniper - junior suite rooms are named after the fragrant incense evergreen found at 10,000-foot altitudes in Bhutan. Located in two and three story stone cottages and have private balconies.
- ✦ Blue Poppy / Takin - Named after Bhutan's national flower and national animal respectively, the Blue Poppy and Takin suites are identical with the exception of their orientation. The Blue Poppy faces east and offers breathtaking views of the valley, and the Takin looks west onto the handsome Wangchuck Academy, established in January 1970 specifically for the education of Bhutan's young Crown Prince (now the current King) . These two suites share a spacious living room and beautiful balcony.
- ✦ Royal Raven - The two-bedroom Royal Raven suite offers a sweeping southern view of the terraced valley dotted with traditional farmhouses and the ornate Paro Rimpung Dzong and National Museum. This superb suite is constructed with hundred-year-old hand-hewn timbers from the residence of a reincarnate lama. It includes a living room that opens onto a private balcony and has its own shrine room.

The eight guest cottages sprawled out on the property, have been named in accordance with the 'Tashi Dagye' - the eight auspicious and lucky symbols of Himalayan Buddhism. Each has a symbolic meaning and represents an object used in religious observances.



- ✦ **Dhook:** The Dhook symbolizes the activity of pre-serving beings from illness and negative forces
- ✦ **Gyel-tshen:** The Gyel-tshen represents the victory of the Buddhist doctrine over harmful forces.
- ✦ **Doong-khaar:** The Doong-khaar is a symbol of the deep and melodious sound of the Dharma teachings.
- ✦ **Pey-yab:** The knot of eternity, Pey-yab, represents the mind and the union of wisdom and compassion.
- ✦ **Ser-nya:** The Ser-nya represents the auspiciousness of all beings in a state of fearlessness without drowning in the ocean of suffering.
- ✦ **Mey-tho:** The Mey-tho is a symbol of the purification of the body, speech and mind.
- ✦ **Boom-pa:** The Boom-pa represents long life, wealth and prosperity.
- ✦ **Khor-lo:** The Khor-lo is the precious wheels of Buddha's doctrine.

IMPORTANT NOTE ON RATES BELOW:

These are special upgrade rates and are in addition to your basic Bhutan Tourism Corporation package as per the costs detailed on this weblink.

[BTCL Bhutan Costs & Conditions.](#)

Rates Below Are Quoted in US Dollars & Include:

- * Applicable room category for one night
- * 20% tax and service charges
- * All Meals

Tariff for the months of - January, February, June, July, August, December.

Room Category Per Room Per Night	SGL	DBL
Junior Suites	US\$ 213	US\$ 279
Room Category Per Room Per Night		
Blue Poppy & Takin Suites - One bedroom suites	US\$ 501	
Royal Raven Suite - Two Bedroom Suite	US\$ 959	

Tariff for the months of - March, April, May, September, October, November.

Room Category Per Night	SGL	DBL
Junior Suites	US\$ 384	US\$ 456
Room Category Per Night		
Blue Poppy & Takin Suites - One bedroom suites	US\$ 674	
Royal Raven Suite - Two Bedroom Suite	US\$ 1289	

Premium rates applicable for the Paro Tshechu (festival) period - from 05 to 09 April 2009.

Room Category Per Night	SGL	DBL
Junior Suites	US\$ 538	US\$ 615
Room Category Per Night		
Blue Poppy & Takin Suites - One bedroom suites	US\$ 851	
Royal Raven Suite - Two Bedroom Suite	US\$ 1531	

The Paro Tshechu (Festival) dates changes every year based on the Bhutanese Lunar calendar.

Zhiwa Ling reserves the right to change the tariff without notice.

[Download & print this page](#)

[Back to Luxury Hotels](#)
